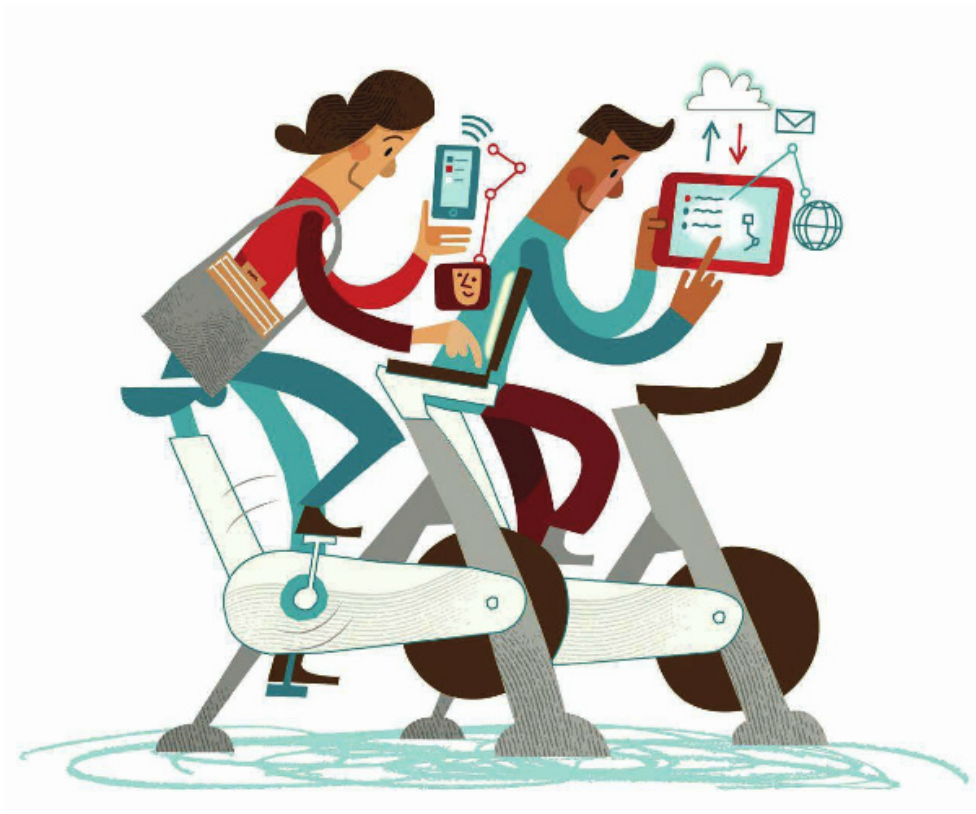


Matheson

Graduate Recruitment Programme

Are you career fit? Train with us and create your future



Matheson's primary focus is on serving the Irish legal needs of internationally focused companies and financial institutions doing business in and from Ireland.

• Our clients include over half of the world's 50 largest banks, 6 of the world's 10 largest asset managers, 7 of the top 10 global technology brands and we have advised the majority of the Fortune 100 companies.

• Our expertise is spread across more than **30 practice areas**, including:

- Finance and Capital Markets
- Corporate
- International Business
- Mergers and Acquisitions
- Technology and Innovation
- Intellectual Property
- Insolvency and Corporate Restructuring
- EU and Competition
- Asset Management and Investment Funds
- Employment, Pensions and Benefits
- Commercial Real Estate
- Commercial Litigation and Dispute Resolution
- Healthcare and Life Sciences
- Insurance
- Tax
- Private Client
- Energy and Infrastructure
- FinTech





I joined Matheson over 25 years ago as a trainee and qualified into the Corporate Department before moving to our Financial Services Department. Matheson arranged placements for me in a US law firm and in a financial institution in London. I was head of our Asset Management practice before becoming Managing Partner in 2016. We truly are a global community with offices in Dublin, Cork, London, New York, Palo Alto and San Francisco. Our firm is dedicated to providing an excellent service to leading global companies. At Matheson, we recognise diversity of talent and the importance of developing that talent to succeed and flourish. By joining Matheson, you'll be joining a community of leading business lawyers. We have designed a leading bespoke trainee lawyer programme for you so that you can be your best.

Michael Jackson, Managing Partner
University College Cork Graduate

I joined Matheson as a trainee in 1994 and became a partner in January 2002 before being appointed head of our Asset Management Group in 2016. I chair the Trainee Liaison Committee, which is a committee of partners with responsibility for the ongoing training and education of our trainees and lawyers. As a firm, we believe that talented people with relevant expertise are the surest route to success. We invest in the training and development of our people and will continue to do so to further our success.

Tara Doyle, Partner and Chair of Matheson's Trainee Liaison Committee
Trinity College Dublin Graduate





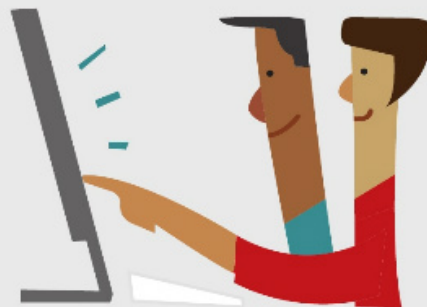
TRAINEE LAWYER PROGRAMME

Our Trainee Lawyer Programme provides our trainees with the training and opportunities they require to become successful business lawyers. Our programme is designed to help trainees make the transition from university graduate to qualified lawyer and to provide them with the knowledge, skills and expertise that our clients expect. Our comprehensive approach ensures that our trainees develop the right skills through a combination of in-office partner and associate mentoring, project work, formal training sessions and regular feedback. We listen to our trainees' rotation preferences and ensure, wherever possible, that they are accommodated. Rotations also include opportunities for client and overseas secondments.



SUMMER INTERNSHIP PROGRAMME

The purpose of our Summer Internship Programme is to give interns a real insight into our work, people and culture. During the four-week programme, interns receive legal skills training, from research skills to the fundamentals of company and corporate law. Our training focuses on providing interns with the skills to become a successful business lawyer, including how to provide an excellent service to our clients and how to present complex legal issues in a simple and understandable manner. As an intern, you will also receive personal development training, which focuses on your presentation and teamwork skills.



OUR OFFERING



- A competitive salary



- 23 days holidays per annum



- PPC I and PPC II fees paid



- Business casual dress code



- Experience working in our practice areas with four rotations during your apprenticeship



- Sharing an office with a partner or associate, providing you with invaluable learning opportunities



- Continuous training and education focused on developing legal, personal and client care skills



- A highly successful mentoring programme



- Firm trainee pension contribution of up to 3%



- On-site gym and personal trainer



- Subsidised restaurant and coffee dock



- Tax saver schemes (eg, Bike to Work and travel schemes)



- Overseas and domestic secondment opportunities



- Annual trainee weekend away



- Volunteering opportunities through the firm's CSR initiatives

WHAT WE LOOK FOR



Our success has been built on the implementation of a clear **client focused strategy**, a commitment to excellence and the calibre of our people.

Our values which encompass partnership, respect, diversity, innovation and entrepreneurship are important to us and guide how we work together and with our clients.

We are looking for trainees who are bright and intelligent, resilient and adaptable, creative with an innovative mind-set and committed to a career in corporate law.

In return, we will provide the training and opportunities needed to become a successful business lawyer and develop your knowledge, skills and expertise that our clients expect.



Matheson's on-site gym is well equipped and great for getting in a quick session before or after work. The firm caters for all your lunch needs through the subsidised restaurant and coffee dock.

Shane Creamer, University of Limerick

We receive dedicated training as part of Matheson's Trainee Programme. With a variety of different programmes focused on essential skills such as drafting, presentations, client care and legal research, the programme has been a core component of my growth as a trainee solicitor.

**Rachel O'Sullivan,
University College Cork**



You cannot be the best
law firm in the market
without the best people
in the market.

**Tara Doyle, Partner and Chair of
Matheson's Trainee Liaison Committee**



For my final rotation, I was given the opportunity to work in the firm's London office and found the experience to be both personally and professionally rewarding. As a large number of our teams maintain a presence in the London office, my daily work was extremely varied which gave me great exposure to so many different areas in just one rotation. From a personal perspective, it was an incredible opportunity to get to know such a fantastic city.

**Conor Woods,
University College
Dublin**



While studying for my FE1s, I started as a pre-trainee with Matheson and I was lucky enough to be sent on a client secondment. Through my secondment, I was able to see how a major corporate client deals with various legal issues. To be given an opportunity to observe the complexity of legal works from the point of view of a client at such an early stage in my career is both exciting and enlightening.

Yewhoan Hong, Trinity College Dublin



Sharing an office with a partner allows you to see first-hand the passion they have for what they do, how they interact with clients and engage with other members of the department. You essentially learn by osmosis.

Liam Markham, University of Limerick / NUI Galway



My time at Matheson has been a new experience each day. From my secondment to South Africa, to recently working on one of the most topical matters in the news, my traineeship has given me opportunities that I only dreamt of as a law student.

Mariam Asanishvili, Tbilisi State University



Matheson provides trainees with diverse experience across many legal practice areas. Working on transactions with market leading clients allows me to constantly develop my skill set and to better understand the commercial and legal issues facing businesses.

Colm Brussels, Dublin City University

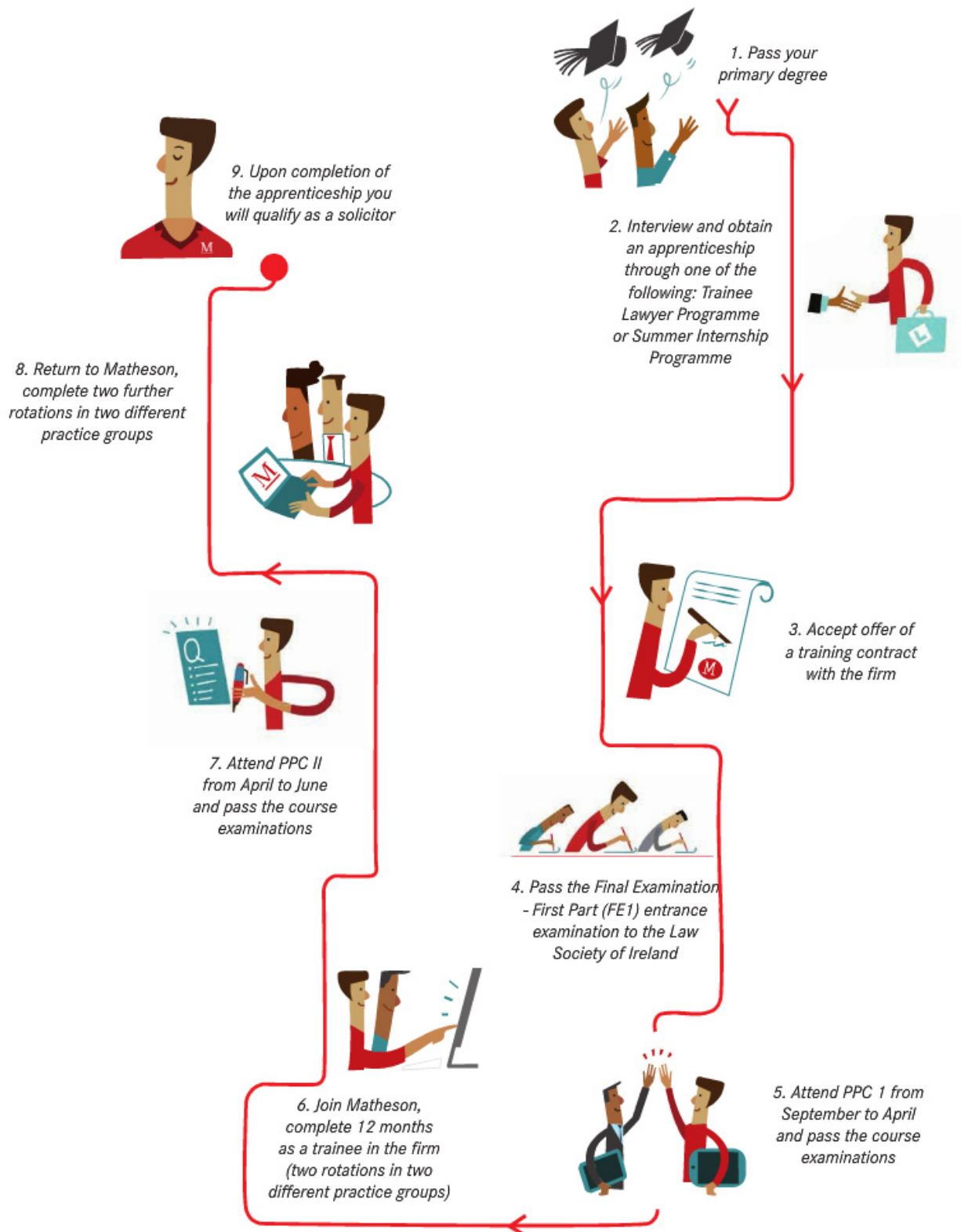


Matheson engages in a number of CSR initiatives such as Junior Achievement Ireland. Getting involved in these initiatives is not only rewarding but also gives us a chance to get to know people across the firm.

Criona Gannon, Maynooth University University



YOUR JOURNEY WITH US



#LifeatMatheson

It is important you have the right work life balance at Matheson. Many of our trainees are actively involved in sporting and other activities with the firm including soccer, tag rugby, running, golf and yoga. In addition, lots of departments regularly host their own team social events.

The firm's corporate philanthropy programme involves more than merely providing donations. Instead, Matheson is focused on helping our talented people to help other people. Volunteers from the firm build relationships with our chosen organisations, creating a spirit of active engagement between Matheson and the organisations we support.

As part of our Diversity and Inclusion Commitment, we organise events throughout the year which promote and foster a diverse and inclusive workplace where all our colleagues and their contributions and perspectives are valued and respected.

At Matheson, we encourage innovative thinking so that we continue to offer the highest standard of services to our clients. We recently launched the Matheson Digital Services Group, a multi-disciplinary team that provides customised digital services and solutions to clients operating across a range of industries and sectors.



753

PROFESSIONALS



PARTNER-LED
OFFICES



97



PARTNERS
& TAX PRINCIPALS

482

LEGAL & TAX
PROFESSIONALS



We strive to make a meaningful contribution to our community - our clients, our people and our society.

We take pride in what we do and consistently deliver excellent service.

We invest in developing our people, seek to give back to society and are strong advocates for our economy.



Partnership

We are a partnership - with our clients and each other. We value teamwork and collaboration.



Respect

Respect is at the core of how we engage with each other, our clients and the work we do.



Innovation

We challenge the status quo, seek better ways to work, create value for our clients and empower our people to innovate.



Diversity

We foster diversity and value all contributions and perspectives.



Entrepreneurship

We are business-focused and solution oriented, using strong commercial acumen to serve our clients.



facebook.com/careersatmatheson



instagram.com/matheson_law



twitter.com/mathesonlaw



linkedin.com/company/matheson1